



CRAVEN ARMS - 5MINS
NEW INN - 8MINS
RED LION - 20MINS



RIVER FIELD KEY:

- HEDGEROW NHU
- RIVERSIDE NHU
- RIVERSIDE EHU
- RIVER WEST WALL EHU
- HEDGEROW JUMBO + HU
- RIVERSIDE JUMBO + HU

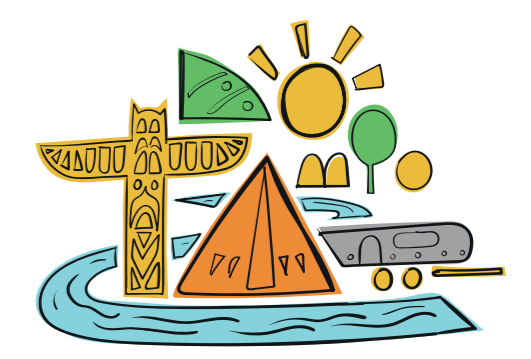
MAIN FIELD KEY:

- GRASS EHU
- GRASS LARGE EHU
- GRASS EXTRA LARGE EHU
- GRASS JUMBO + EHU
- GRASS FULLY SERVICED EHU

1: WASHING UP SINKS
2: ELSAN POINT
3: GREY WATER
4: LAUNDRY / BOOT ROOM

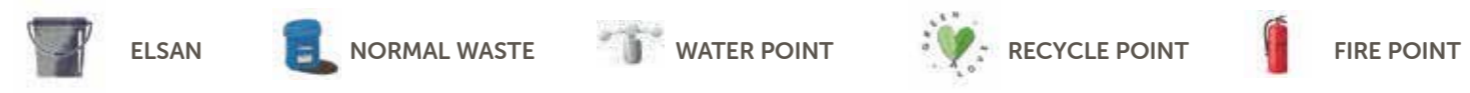
NHU : NON ELECTRIC
EHU : ELECTRIC HOOKUP

A: FACILITIES BLOCK
 SHOWERS, SINKS & TOILETS
B: PRIVATE HOME
C: MASONS KITCHEN
D: RECEPTION/SHOP
E: COMMUNAL FREEZER
F: FIRE PIT STATION



MASONS
CAMP SITE

Map not to scale
Masons Campsite, Appletreewick, Nr Skipton, BD23 6DD



T: 01756 720 275E: www.masonscampsite.co.uk